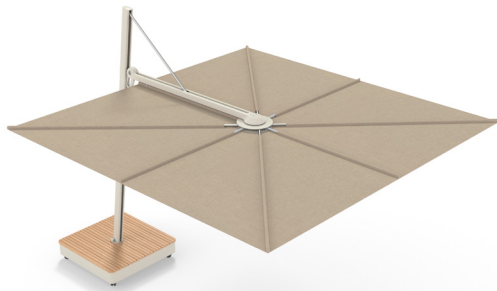
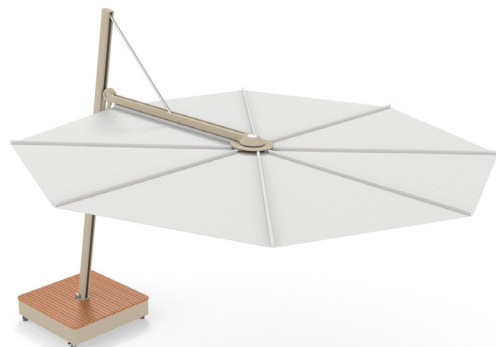


MODEL



3M Square



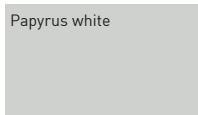
3.5M Round

FRAME COLORS

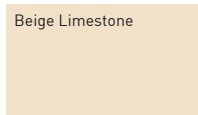
Ral 9016
White



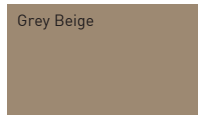
Ral 9018
Papyrus white



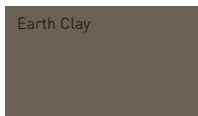
Ral 1013*
Beige Limestone



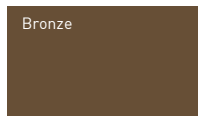
Ral 1019
Grey Beige



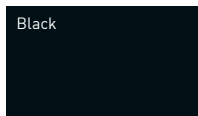
Ral 7006*
Earth Clay



Ral 8014*
Bronze

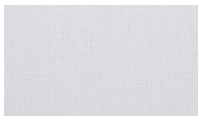


Ral 9005
Black



FABRIC COLORS

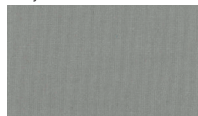
Natural



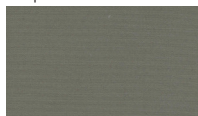
Canvas



Grey



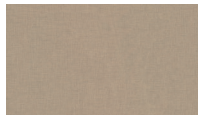
Taupe



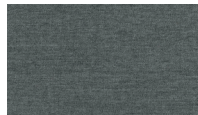
Marble



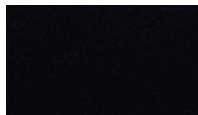
Sand



Flanelle



Black

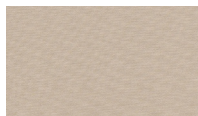


NEW COLOURS

Lin



Avena



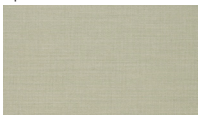
Nectar



Terra



Apio



Acqua



*Reference color

BASES Choose between large PX tilebase or large flat base.

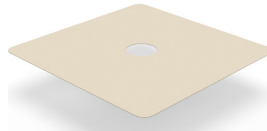
TOP PLATE



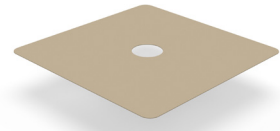
RAL 9016 - White



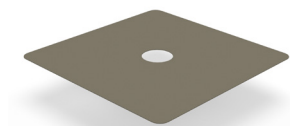
RAL 9018 - Papyrus white



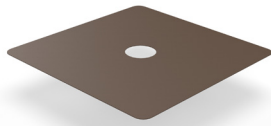
RAL 1013* - Beige limestone



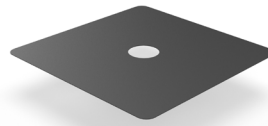
RAL 1019 - Grey Beige



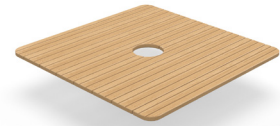
RAL 7006* - Earth Clay



RAL 8014* - Bronze

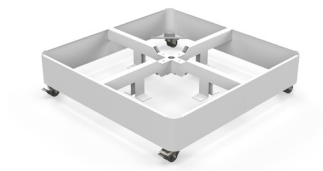


RAL 9005 - Black

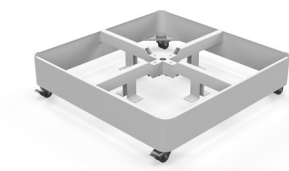


Thermo poplar**

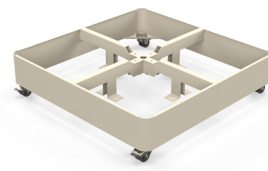
BASE FRAME



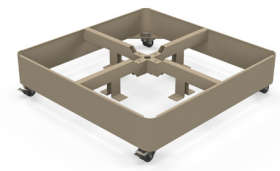
RAL 9016 - White



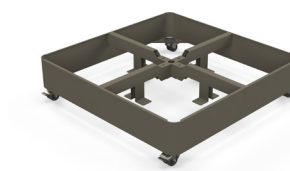
RAL 9018 - Papyrus white



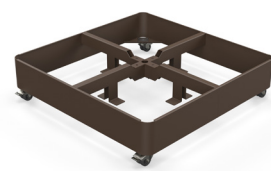
RAL 1013* - Beige limestone



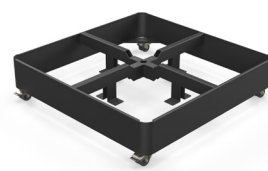
RAL 1019 - Grey Beige



RAL 7006* - Earth Clay



RAL 8014* - Bronze



RAL 9005 - Black



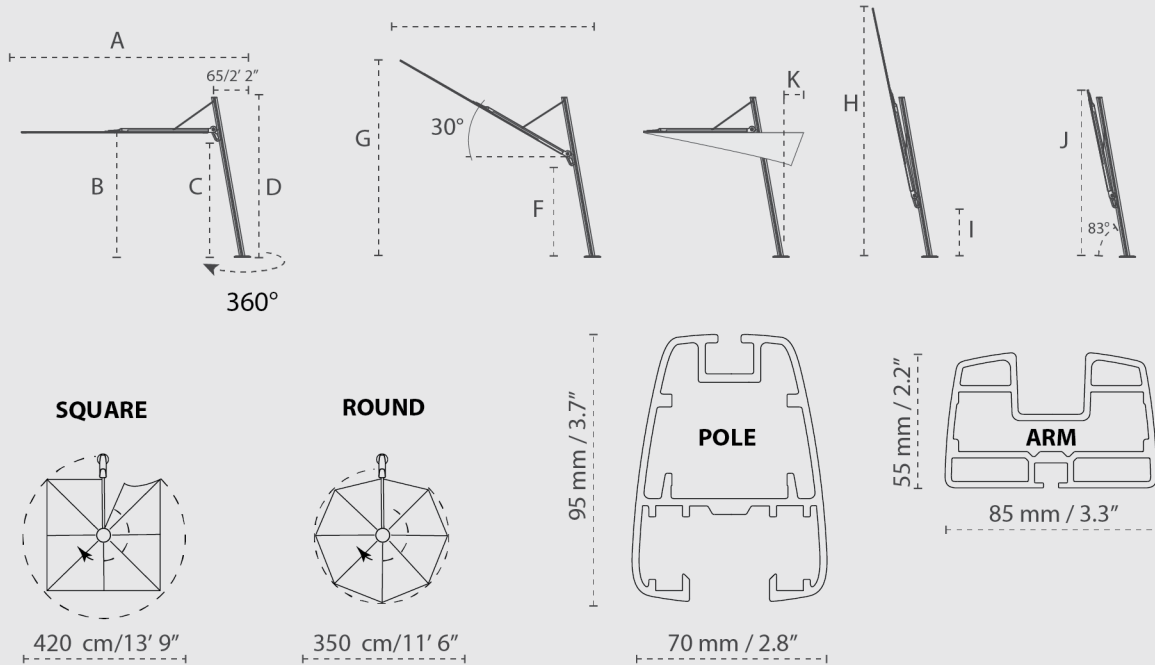
Galvanised steel (for flat base)

*Reference color

**Our wooden covers are made of thermotreated poplar wood that has not been treated for color stability. The wood will weather with outdoor exposure and turn grey.

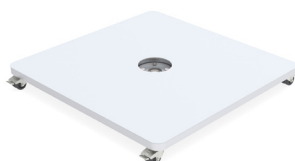
DIMENSIONS

VERSA PX



		A	B	C	D	E	F	G	H	I	J	K
		cm/ft	cm/ft	cm/ft	cm/ft	cm/ft	cm/ft	cm/ft	cm/ft	cm/ft	cm/ft	cm/ft
⊠	3 x 3 m / 9' 10" x 9' 10"	365/11' 12"	195/6' 5"	185/6' 1"	260/8' 6"	280/9' 2"	128/4' 2"	325/10' 8"	410/13' 5"	77/2' 6"	265/8' 8"	0/ 0"
⊗	3,5 m / 11' 6"	380/12' 6"	195/6' 5"	185/6' 1"	260/8' 6"	295/9' 8"	128/4' 2"	340/11' 2"	425/13' 11"	77/2' 6"	280/9' 2"	0/ 0"

DIMENSIONS BASE



Wheelset included

Recommended weight for tiles : 177 kg or 389.4 lbs

Recommended tiles Europe – 40x40x4,5 cm // USA – 16"x16"x1.75"

You need 12 tiles for the Large PX Tile Base – see manual.

Base dimensions	L x W x H cm	L x W x H Inch	weight kg/lbs
Large PX Tile Base + Powder coated top plate	88,8x88,8x22	34.96"x34.96"x8.66"	32/70.4
Large PX Tile Base + Wooden top plate	88,8x88,8x24	34.96"x34.96"x9.45"	32/70.4
Large Flat base	90x90x10	35.43"x35.43"x3.93"	180/397

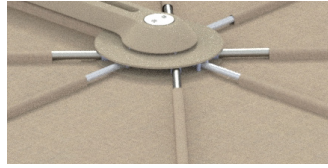
MATERIALS



FABRIC

100% Acryl 260 gr/m²

More details – see spec sheet Fabrics



RIBS

Glass fiber ribs - Ø 16mm/0.63"



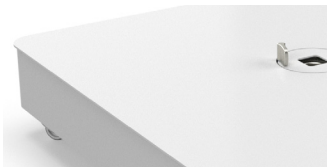
POLE

Aluminum, Fine textured-
powder coating



HANDLES

Casted aluminum, powder coated
Stainless steel 316, polished



BASE FRAME

Galvanised steel, Fine textured
powder coating



BASE TOP PLATE

Galvanised steel, fine textured
powder coating,
Wooden cover Thermo Poplar*

*Our wooden covers are made of thermotreated poplar wood that has not been treated for color stability. The wood will weather with outdoor exposure and turn grey.

PACKAGING & TRANSPORT

Versa PX	L (cm)	W (cm)	H (cm)	Weight (kg)	L (ft)	W (ft)	H (ft)	Weight (lbs)
Umbrella packaging	274	37	32	32 kg	8'11.8"	1'2.6"	1'0.6"	70
Large PX Base frame packaging	88.8	88.8	15	32 kg	2'11"	2'11"	5.9"	70.4
Large Flat base underframe palette	120	92	30	120 kg	3'11"	3'0.2"	11.8"	397
Powder coated top plate packaging	90	90	10	6.5 kg	2'9.5"	2'9.5"	3.9"	14.3
Wooden top plate packaging	90	90	10	6.5 kg	2'9.5"	2'9.5"	3.9"	14.3

NICE TO KNOW

- Spare parts available
- Designed and manufactured in Belgium
- Warranty between 15 and 2 years, see Warranty Sheet
- Manual included
- Wind speeds up to 4 beaufort, 28km/h, 18 mph when base is permanently fixed
- Protection cover included (Color: Flanelle)

SAFETY STATEMENTS & WARNINGS

- Product is suitable for light wind and/or light rain only.
- Position product in direction of wind as recommended in user manual.
- Do not use product in inclement weather, such as strong wind, thunderstorms, heavy rain or snow, and make sure that the umbrella is closed and stored in advance.
- Never allow the umbrella to flap in the wind. This could cause personal injury, damage to personal property, damage to umbrella and/or umbrella canopy.
- Close product and secure strap when not in use.
- Do not use product without its base or unless attached to building structure, and keep umbrella secured to umbrella base or mount at all times.
- Do not use product over or near harsh chemicals or open flames.
- Place product on stable and level surface.
- Do not allow children to assemble or operate product.
- Do not leave product unattended.
- Store product indoors during winter and extreme weather conditions.
- When adjusting or assembling the umbrella or umbrella base, make sure fingers, toes or any other parts of the body are clear from moving parts. Failing to do so may result in serious injury.
- Only use Umbrosa replacement parts.
- Read owner's manual.
- Any modifications to the product or failure to follow recommended care will void the warranty.
- Wind damage is not covered under our limited warranty.

The content of this document, in particular the mentioned models, is protected by copyrights and/or design rights. The present document and its content is communicated to you for information purposes only. Any partial or total reproduction or any other use without our prior written permission is strictly prohibited. This technical sheet remains subject to possible changes. Of course we do our best to eliminate all mistakes, but Umbrosa is not responsible for the errors in the documentation of products. All measurements are approximate and are provided for informational purposes only.