

## MOUNTING OPTIONS PARASOL COLLECTIONS

### FIXATION ON HARD GROUND

Round support to install the pole on a hard ground (concrete - wood) or on an Umbrosa base. For all collections except Ingenua.

#### ROUND SUPPORT MONO PARASOLS

##### Paraflex Mono

ROUNDSUPPORTTYPE1



##### Infina | Nano UX

ROUNDSUPPORTTYPE2



##### Spectra 90° | Eclisum UX

ROTATIONSUPPORT-90  
(support + rotation disc)



##### Spectra 80°Versa UX | Icarus (UX)

ROTATIONSUPPORT-80  
(support + rotation disc)



	LxWxH cm	LxWxH ft	Weight kg/lbs	LxWxH cm packaging	LxWxH ft packaging	Weight kg/lbs packaging
ROUNDSUPPORTTYPE1	14x14x49	5.51"x5.51"x19.29"	2,5 / 5.5	50x22x22	19.69"x8.66"x8.66"	2,8 / 6.1
ROUNDSUPPORTTYPE2	13x13x41	5.12"x5.12"x16.14"	1,8 / 3.9	50x22x22	19.69"x8.66"x8.66"	2,8 / 6.1
ROTATIONSUPPORT-90	16x16x54	6.3"x6.3"x21.26"	5,3 / 11.6	50x22x22	19.69"x8.66"x8.66"	6,3 / 13.8
ROTATIONSUPPORT-80	16x16x54	6.3"x6.3"x21.26"	5,3 / 11.6	50x22x22	19.69"x8.66"x8.66"	6,3 / 13.8

Note: Rotational support to install the pole on a hard surface (wood-concrete) – notch in the surface is needed (see installation manual).  
Alternatively you can order spacers from Umbrosa.

#### ROUND SUPPORT DUO, OPPOSITE AND MULTI PARASOLS

##### Spectra Duo

DUOROTATIONSUPPORT  
(support + rotation disc)



##### Spectra Opposite

OPPROTATIONSUPPORT  
(support + rotation disc)



##### Spectra Multi

MULTISUPPORT



##### Paraflex Duo & Multi

UM-ROUNDSUPPORT-90

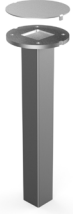


	LxWxH cm	LxWxH ft	Weight kg/lbs	LxWxH cm packaging	LxWxH ft packaging	Weight kg/lbs packaging
DUOROTATIONSUPPORT	18x17x49	7.87"x7.87"x19.29"	11/24.2	50x22x22	19.69"x8.66"x8.66"	12/26.4
OPPROTATIONSUPPORT	20x16x54	7.09"x6.69"x21.26"	11,2 / 24.6	50x22x22	19.69"x8.66"x8.66"	12,2 / 26.8
MULTISUPPORT	20x20x49	7.87"x6.3"x21.26"	7,8 / 17.1	50x22x22	19.69"x8.66"x8.66"	8,8 / 19.3
UM-ROUNDSUPPORT-90	21,5x21,5x49	8.46"x8.46"x19.29"	3,8 / 8.3	50x22x22	19.69"x8.66"x8.66"	4,8 / 10.5

## FIXATION IN SOFT GROUND

Concrete anchorage to install the pole in a "soft" ground pouring concrete.  
For all collections except Ingenua.

INGROUNDANCHORTYPE1



	LxWxH cm	LxWxH ft	Weight kg/lbs	LxWxH cm packaging	LxWxH ft packaging	Weight kg/lbs packaging
INGROUNDANCHORTYPE1	13x13x41	5.12"x5.12"x16.14"	2,4/5.3	50x22x22	19.69"x8.66"x8.66"	3,4/7.4

## MEDIUM TILE BASE STANDARD

### Paraflex Mono | Inфина

TILEBASE-M-ALU



### Inфина Black | Nano UX Full Black

TILEBASE-M-BLACK



### Nano UX Architecture

TILEBASE-M-ARCHI



	LxWxH cm	LxWxH ft	Weight kg/lbs	LxWxH cm packaging	LxWxH ft packaging	Weight kg/lbs packaging
TILEBASE-M-COLOUR	88,6x88,6x17,5	34.88"x34.88"x6.89"	17/37.4	90x90x11	35.43"x35.43"x4.33"	18/39.6

Wheelset included

Recommended weight for tiles : 118 kg or 259.6 lbs

Recommended tiles Europe – 40x40x4,5 cm // USA – 16"x16"x1.75"

You need 8 tiles for the Medium Tile base – see Manual.

## LARGE TILE BASE STANDARD

### Paraflex Duo & Multi

Spectra | Icarus

TILEBASESTD-L-ALU



### Spectra

TILEBASESTD-L-BLACK



	LxWxH cm	LxWxH ft	Weight kg/lbs	LxWxH cm packaging	LxWxH ft packaging	Weight kg/lbs packaging
TILEBASESTD-L-COLOUR	88,6x88,6x22	34.88"x34.88"x8.66"	17,5/37.4	90x90x16	35.43"x35.43"x6.3"	18/39.6

Wheelset included

Recommended weight for tiles : 177 kg or 389.4 lbs

Recommended tiles Europe – 40x40x4,5 cm // USA – 16"x16"x1.75"

You need 12 tiles for the Large Tile base – see Manual.

## LARGE TILE BASE UX

**Versa UX Archi**  
**Eclisum UX Archi**  
TILEBASEUX-L-ARCHI



**Versa UX Full Black**  
**EclisumUX Full Black**  
TILEBASEUX-L-BLACK



**Versa UX Sand**  
**Icarus UX Sand**  
TILEBASEUX-L-SAND



Cover: Thermo Poplar

**Versa UX Safari**  
**Versa UX Latte**  
TILEBASEUX-L-SAFARI  
TILEBASEUX-L-LATTE



Cover: Thermo Poplar

	LxWxH cm	LxWxH ft	Weight kg/lbs	LxWxH cm packaging	LxWxH ft packaging	Weight kg/lbs packaging
ARCHI/BLACK	88,8x88,8x22	34.96"x34.96"x8.66"	32/70.4	90x90x16	35.43"x35.43"x6.3"	33/72.6
SAND/ SAFARI/LATTE	88,8x88,8x24	34.96"x34.96"x9.45"	32/70.4	90x90x17	35.43"x35.43"x6.69"	33/72.6

Wheelset included

Recommended weight for tiles : 177 kg or 389.4 lbs

Recommended tiles Europe – 40x40x4,5 cm // USA – 16"x16"x1.75"

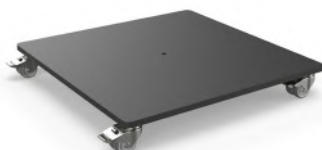
You need 12 tiles for the Large Tile Base UX – see manual.

## MEDIUM FLAT BASE

**Infina Alu**  
FLATBASE-M-ALU



**Infina Black**  
FLATBASE-M-BLACK



**Infina UX Latte**  
FLATBASE-M-LATTE



Cover: Thermo Poplar

Extra weight plate compulsory for Infina 3x3m umbrella (FIBASEEXTRA)

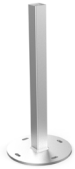
	LxWxH cm	LxWxH ft	Weight kg/lbs	LxWxH cm packaging	LxWxH ft packaging	Weight kg/lbs packaging
BASE ALU / BLACK	73x73x8,5	28.74"x28.74"x3.35"	50/110	80x80x7	31.05"x31.05"x2.76"	51/112.2
BASE LATTE	78x78x10,5	30.7"x30.7"x4.1"	50/110	82x82x14	32.3"x32.3"x5.5"	51/112.2
Extra Weight	60x60x0,9	23.62"x23.62"x0.35"	20,5 / 45.1	62x62x1,1	24.41"x24.41"x0.43"	21/46.2

Wheelset included

## MOUNTING OPTIONS FOR THE INGENUA COLLECTION

### HARD SURFACE

UM-ROUNDSUPPORT-90



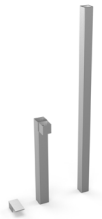
UM-ROUNDSUPPORT-80



	LxWxH cm	LxWxH ft	Weight kg/lbs	LxWxH cm packaging	LxWxH ft packaging	Weight kg/lbs packaging
UM-ROUNDSUPPORT-90	21,5x21,5x49	8.46"x8.46"x19.29"	3,8 / 8.3	50x22x22	19.69"x8.66"x8.66"	4,8/10.5
UM-ROUNDSUPPORT-80	21,5x21,5x49	8.46"x8.46"x19.29"	3,8 / 8.3	50x22x22	19.69"x8.66"x8.66"	4,8/10.5

### SOFT SURFACE

INGROUNDANCHORAGE-90



INGROUNDANCHORAGE-80



	LxWxH cm	LxWxH ft	Weight kg/lbs	LxWxH cm packaging	LxWxH ft packaging	Weight kg/lbs packaging
INGROUNDANCHORAGE-90	90x15x4,5	35.43"x5.91"x1.97"	5,5 / 12.1	91x20x5	35.83"x7.87"x1.97"	6 / 13.2
INGROUNDANCHORAGE-80	90x15x4,5	35.43"x5.91"x1.97"	5,5 / 12.1	91x20x5	35.83"x7.87"x1.97"	6 / 13.2

### NICE TO KNOW

- Spare parts available
- Designed and manufactured in Belgium
- Warranty between 10 and 2 years, please consult our warranty policy at [www.umbrosa.com](http://www.umbrosa.com)
- Download owner's manual (QR-code included), also available at [www.umbrosa.com](http://www.umbrosa.com)
- Wind speeds up to 6 beaufort, 50 km/h, 31 mph when base is permanently fixed (for details, please check our wind spec sheet)
- Tested at TU Delft

# MOUNTING OPTIONS & BASES

---

## SAFETY STATEMENTS & WARNINGS

- Product is suitable for light wind and/or light rain only.
- Position product in direction of wind as recommended in user manual.
- Do not use product in inclement weather, such as strong wind, thunderstorms, heavy rain or snow, and make sure that the umbrella is closed and stored in advance.
- Never allow the umbrella to flap in the wind. This could cause personal injury, damage to personal property, damage to umbrella and/or umbrella canopy.
- Close product and secure strap when not in use.
- Do not use product without its base or unless attached to building structure, and keep umbrella secured to umbrella base or mount at all times.
- Do not use product over or near harsh chemicals or open flames.
- Place product on stable and level surface.
- Do not allow children to assemble or operate product.
- Do not leave product unattended.
- Store product indoors during winter and extreme weather conditions.
- When adjusting or assembling the umbrella or umbrella base, make sure fingers, toes or any other parts of the body are clear from moving parts. Failing to do so may result in serious injury.
- Only use Umbrosa replacement parts.
- Read owner's manual.
- Any modifications to the product or failure to follow recommended care will void the warranty.
- Wind damage is not covered under our limited warranty.