

MOUNTING OPTIONS PARASOL COLLECTIONS

FIXATION ON HARD GROUND

Round support to install the pole on a hard ground (concrete - wood) or on an Umbrosa base. For all collections except Ingenua.

ROUND SUPPORT MONO PARASOLS

Paraflex Mono

ROUNDSUPPORTTYPE1



Infina | Nata (UX)

ROUNDSUPPORTTYPE2



Spectra 90° | Eclisum UX

ROTATIONSUPPORT-90
(support + rotation disc)



Spectra 80°Versa UX | Icarus (UX)

ROTATIONSUPPORT-80
(support + rotation disc)



	LxWxH cm	LxWxH ft	Weight kg/lbs	LxWxH cm packaging	LxWxH ft packaging	Weight kg/lbs packaging
ROUNDSUPPORTTYPE1	14x14x49	5.51"x5.51"x19.29"	2,5/5.5	50x22x22	19.69"x8.66"x8.66"	2,8 / 6.1
ROUNDSUPPORTTYPE2	13x13x41	5.12"x5.12"x16.14"	1,8/3.9	50x22x22	19.69"x8.66"x8.66"	2,8 / 6.1
ROTATIONSUPPORT-90	16x16x54	6.3"x6.3"x21.26"	5,3 / 11.6	50x22x22	19.69"x8.66"x8.66"	6,3 / 13.8
ROTATIONSUPPORT-80	16x16x54	6.3"x6.3"x21.26"	5,3 / 11.6	50x22x22	19.69"x8.66"x8.66"	6,3 / 13.8

Note: Rotational support to install the pole on a hard surface (wood-concrete) – notch in the surface is needed (see installation manual).
Alternatively you can order spacers from Umbrosa.

ROUND SUPPORT DUO, OPPOSITE AND MULTI PARASOLS

Spectra Duo

DUOROTATIONSUPPORT
(support + rotation disc)



Spectra Opposite

OPPROTATIONSUPPORT
(support + rotation disc)



Spectra Multi

MULTISUPPORT



Paraflex Duo & Multi

UM-ROUNDSUPPORT-90

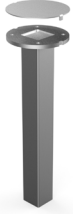


	LxWxH cm	LxWxH ft	Weight kg/lbs	LxWxH cm packaging	LxWxH ft packaging	Weight kg/lbs packaging
DUOROTATIONSUPPORT	18x17x49	7.87"x7.87"x19.29"	11/24.2	50x22x22	19.69"x8.66"x8.66"	12/26.4
OPPROTATIONSUPPORT	20x16x54	7.09"x6.69"x21.26"	11,2/24.6	50x22x22	19.69"x8.66"x8.66"	12,2/26.8
MULTISUPPORT	20x20x49	7.87"x6.3"x21.26"	7,8/17.1	50x22x22	19.69"x8.66"x8.66"	8,8/19.3
UM-ROUNDSUPPORT-90	21,5x21,5x49	8.46"x8.46"x19.29"	3,8 / 8.3	50x22x22	19.69"x8.66"x8.66"	4,8/10.5

FIXATION IN SOFT GROUND

Concrete anchorage to install the pole in a "soft" ground pouring concrete.
For all collections except Ingenua.

INGROUNDANCHORTYPE1



	LxWxH cm	LxWxH ft	Weight kg/lbs	LxWxH cm packaging	LxWxH ft packaging	Weight kg/lbs packaging
INGROUNDANCHORTYPE1	13x13x41	5.12"x5.12"x16.14"	2,4/5.3	50x22x22	19.69"x8.66"x8.66"	3,4/7.4

LARGE TILE BASE STANDARD

**Paraflex Mono, Duo & Multi
Spectra | Icarus**

TILEBASESTD-L-ALU



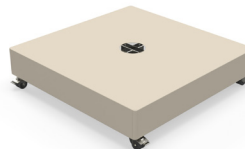
Spectra

TILEBASESTD-L-BLACK



Spectra

TILEBASESTD-L-LIME



	LxWxH cm	LxWxH ft	Weight kg/lbs	LxWxH cm packaging	LxWxH ft packaging	Weight kg/lbs packaging
TILEBASESTD-L-COLOUR	88,6x88,6x22	34.88"x34.88"x8.66"	17,5/37.4	90x90x16	35.43"x35.43"x6.3"	18/39.6

Wheelset included

Recommended weight for tiles : 177 kg or 389.4 lbs

Recommended tiles Europe – 40x40x4,5 cm // USA – 16"x16"x1.75"

You need 12 tiles for the Large Tile base – see Manual.

LARGE TILE BASE UX

**Versa UX Archi
Eclisum UX Archi**

TILEBASEUX-L-ARCHI



**Versa UX Full Black
Eclisum UX Full Black**

TILEBASEUX-L-BLACK



**Versa UX Sand
Icarus UX Sand**

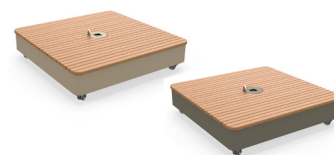
TILEBASEUX-L-SAND



Cover: Thermo Poplar*

**Versa UX Safari
Versa UX Latte**

TILEBASEUX-L-SAFARI
TILEBASEUX-L-LATTE



Cover: Thermo Poplar*

	LxWxH cm	LxWxH ft	Weight kg/lbs	LxWxH cm packaging	LxWxH ft packaging	Weight kg/lbs packaging
ARCHI/BLACK	88,8x88,8x22	34.96"x34.96"x8.66"	32/70.4	90x90x16	35.43"x35.43"x6.3"	33/72.6
SAND/ SAFARI/LATTE	88,8x88,8x24	34.96"x34.96"x9.45"	32/70.4	90x90x17	35.43"x35.43"x6.69"	33/72.6

Wheelset included

Recommended weight for tiles : 177 kg or 389.4 lbs

Recommended tiles Europe – 40x40x4,5 cm // USA – 16"x16"x1.75"

You need 12 tiles for the Large Tile Base UX – see manual.

*Our UX wooden covers are made of thermotreated poplar wood that has not been treated for color stability. The wood will weather with outdoor exposure and turn grey.

MOUNTING OPTIONS FOR THE INGENUA COLLECTION

HARD SURFACE

UM-ROUNDSUPPORT-90



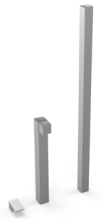
UM-ROUNDSUPPORT-80



	LxWxH cm	LxWxH ft	Weight kg/lbs	LxWxH cm packaging	LxWxH ft packaging	Weight kg/lbs packaging
UM-ROUNDSUPPORT-90	21,5x21,5x49	8.46"x8.46"x19.29"	3,8 / 8.3	50x22x22	19.69"x8.66"x8.66"	4,8/10.5
UM-ROUNDSUPPORT-80	21,5x21,5x49	8.46"x8.46"x19.29"	3,8 / 8.3	50x22x22	19.69"x8.66"x8.66"	4,8/10.5

SOFT SURFACE

INGROUNDANCHORAGE-90



INGROUNDANCHORAGE-80



	LxWxH cm	LxWxH ft	Weight kg/lbs	LxWxH cm packaging	LxWxH ft packaging	Weight kg/lbs packaging
INGROUNDANCHORAGE-90	90x15x4,5	35.43"x5.91"x1.97"	5,5 / 12.1	91x20x5	35.83"x7.87"x1.97"	6 / 13.2
INGROUNDANCHORAGE-80	90x15x4,5	35.43"x5.91"x1.97"	5,5 / 12.1	91x20x5	35.83"x7.87"x1.97"	6 / 13.2

NICE TO KNOW

- Spare parts available
- Designed and manufactured in Belgium
- Warranty between 10 and 2 years, please consult our warranty policy at www.umbrosa.com
- Download owner's manual (QR-code included), also available at www.umbrosa.com
- Wind speeds up to 6 beaufort, 50 km/h, 31 mph when base is permanently fixed (for details, please check our wind spec sheet)
- Tested at TU Delft

MOUNTING OPTIONS & BASES

SAFETY STATEMENTS & WARNINGS

- . Product is suitable for light wind and/or light rain only.
- . Position product in direction of wind as recommended in user manual.
- . Do not use product in inclement weather, such as strong wind, thunderstorms, heavy rain or snow, and make sure that the umbrella is closed and stored in advance.
- . Never allow the umbrella to flap in the wind. This could cause personal injury, damage to personal property, damage to umbrella and/or umbrella canopy.
- . Close product and secure strap when not in use.
- . Do not use product without its base or unless attached to building structure, and keep umbrella secured to umbrella base or mount at all times.
- . Do not use product over or near harsh chemicals or open flames.
- . Place product on stable and level surface.
- . Do not allow children to assemble or operate product.
- . Do not leave product unattended.
- . Store product indoors during winter and extreme weather conditions.
- . When adjusting or assembling the umbrella or umbrella base, make sure fingers, toes or any other parts of the body are clear from moving parts. Failing to do so may result in serious injury.
- . Only use Umbrosa replacement parts.
- . Read owner's manual.
- . Any modifications to the product or failure to follow recommended care will void the warranty.
- . Wind damage is not covered under our limited warranty.

The content of this document, in particular the mentioned models, is protected by copyrights and/or design rights. The present document and its content is communicated to you for information purposes only. Any partial or total reproduction or any other use without our prior written permission is strictly prohibited. This technical sheet remains subject to possible changes. Of course we do our best to eliminate all mistakes, but Umbrosa is not responsible for the errors in the documentation of products. All measurements are approximate and are provided for informational purposes only.